

36th ANNUAL WHEATON NORTH GIRLS CLASSIC

Saturday, October 5, 2019 at St. James Farm, Warrenville, IL

Greetings!

- What?** We are excited to have your team come to The Classic, hosted by Wheaton North, this year.
- When?** The meet is Saturday, October 5th, 2019
- Where?** at St. James Farm Forest Preserve in Warrenville, IL.
- Who?** Benet Academy, Glenbard North, Glenbard West, Grant, Lake Forest, Lockport, Loyola Academy, Mahomet Seymour, Maine South, Marist, Neuqua Valley, New Trier, North Oldham (KY), O'Fallon, Oswego East, Plainfield South, Rosary, St. Charles East, Waubonsie Valley, Wheaton North, and York

Meet Entry & Timing: The race will be timed and scored by RaceTime this year. Please use the attached Excel spreadsheet to email your rosters to the timing company. Email them directly to racetime21@hotmail.com Please put "The Classic - October 5" in the subject line of your email. Just one roster. There is no need to indicate which race which girl is in. Please submit this email to RaceTime by October 2nd.

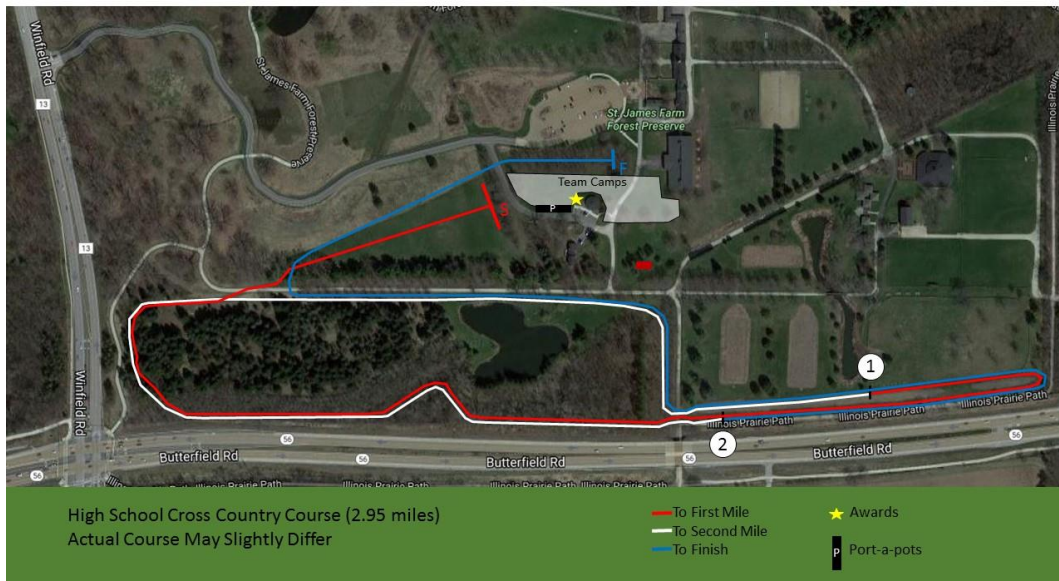
Meet Schedule:	7:45	Head Coaches' Meeting at finish line
	8:30	Junior/Senior Open Race
	9:00	Flight 7 #7 runner
	9:15	Flight 6 #6 runner
	9:30	Flight 5 #5 runner
	9:45	Flight 4 #4 runner
	9:59	Flight 3 #3 runner
	10:13	Flight 2 #2 runner
	10:27	Flight 1 #1 runner
	11:00	Freshman/Sophomore Open race
	11:45	Awards

Please make sure your athletes are prompt to the start line. We will hold true to the above time schedule.

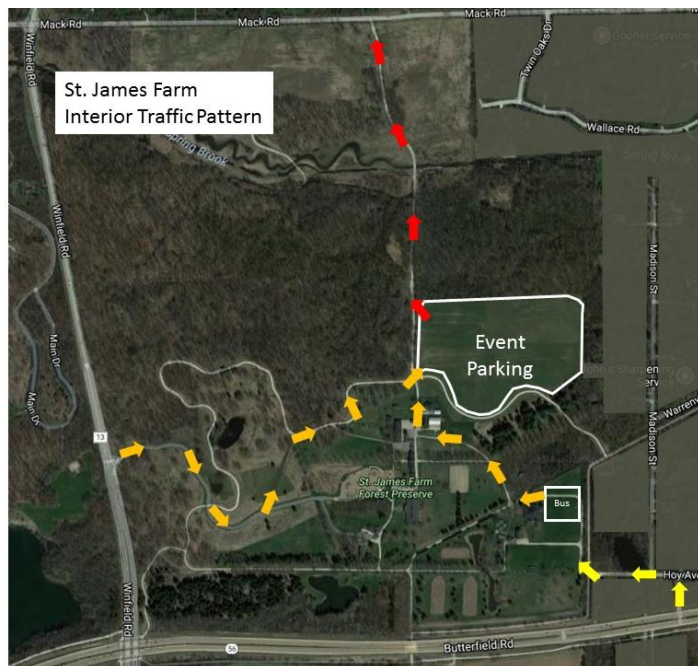
Scoring: The Varsity team score is determined by adding the individual places in each flight. Teams must start 7 runners and finish at least 6 to earn a team score. If a team only finishes 6 runners, it will receive a credit for last place in the flight where it did not have a finisher. If 2 or more teams fail to finish a runner in the same flight, all such teams will receive the same score, last place. If a team fails to finish 6 runners, its results will be dropped from team scoring. A tie in the team results is broken by the better finish place of the competitors in flight #1.

Awards: Top 10 each flight —medallions presented at awards ceremony
Top 5 teams — plaques presented at awards ceremony
Ribbons 1—100 for both Open Races will be given at end of meet in a team envelope

For Sale: Long-sleeved Classic navy T-shirt for sale for \$20 and a nicely stocked concessions area.



Course: There is nothing changed about the course this year. Construction in the team tent area is finished. There is a new bathroom in the building by the team camps (Indoor Riding Arena) with indoor plumbing that is **NOT** for the athletes. The forest preserve has asked that it *only* be used by coaches and spectators. Port a Pot bank will be located across from start line.



Parking:

Buses will drop off in main lot off of Winfield Road (just north of Butterfield) near team camps. Following drop off, busses will be rerouted to **Hoy Ave** entrance (take Butterfield Rd. East, Left on Madison, left on Hoy). Please load your bus in the Hoy lot following the conclusion of awards. We will continue to park buses in a manner that allows for easy out and expedited departure. Following the conclusion of the meet, **all buses will depart bus parking via Hoy Ave.**

Spectators will enter from **Winfield Rd.** entrance and park on site in a separate area, following directions of parking marshals. **Mack Rd. is a one-way road for spectator EXIT ONLY.** Vehicle route map is above; please distribute to your team or post on your team website. Please urge your parents to arrive early to allow time to park and walk the ½ mile to the course.

Thanks,
 Peter Anderson
 Head Coach – Girls Cross Country, Wheaton North